

The Effect of Stiffness of Impression Materials and Flexibility of Trays on the Casting Accuracy (An In-Vitro Study)

Mohamed Shah Gomma^{1*}, Rabab Mohamed Ibrahim² and Rasha Nabil Mohamed Sami³

¹MSc. of Fixed Prosthodontics, Faculty of Oral and Dental Medicine, Cairo University, Saudi Arabia

²Professor of Fixed Prosthodontics, Faculty of Oral and Dental Medicine, Cairo University, Saudi Arabia

³Lecturer of Fixed Prosthodontics, Faculty of Oral and Dental Medicine, Cairo University, Saudi Arabia

***Corresponding author:** Mohamed Shah Gomma, MSc. of Fixed Prosthodontics, Faculty of Oral and Dental Medicine, Cairo University, Saudi Arabia.

Citation: Gomma MS, Ibrahim RM, Sami RNM. The effect of stiffness of impression materials and flexibility of trays on the casting accuracy (An in-vitro study): J Oral Med and Dent Res. 5(1):1-10.

Received: March 15, 2024 | **Published:** April 01, 2024

Copyright© 2024 genesis pub by Gomma MS, et al. CC BY-NC-ND 4.0 DEED. This is an open-access article distributed under the terms of the Creative Commons Attribution-Non Commercial-No Derivatives 4.0 International License. This allows others distribute, remix, tweak, and build upon the work, even commercially, as long as they credit the authors for the original creation.

Abstract

To study the result of utilizing two impression materials of various stiffness with three impression trays of variable flexibility on the marginal casting accuracy of metal cores. Materials and Methods: The lower first molar of an acrylic model mounted to a semi-adjustable articulator was made for a full veneered metal coping. Thirty impressions were prepared with metal triple impression trays, plastic triple impression trays and a resin custom made tray using polyvinyl siloxane and polyether impression materials. Each was cast in type IV hard dental stone and the occlusogingival, mesiodistal and buccolingual dimensions of the obtained dies were measured using a traveling microscope and the prepared tooth served as a control. Wax patterns were fabricated on each stone die then cast into metal copings. Each metal coping was fitted on the prepared tooth and examined for vertical marginal gap accuracy using the travelling microscope. One-way ANOVA followed by pair-wise tukey's post-hoc tests were performed to detect the significance between groups, then separate

student t-tests to detect the significance between subgroups.

Keywords

Elastomers; Dual-arch trays; Marginal gap

Introduction

The success of any fixed prosthodontic treatment plan depends on multiple steps. The impression making procedure is considered one of the key steps for reaching a successful final restoration. Its overall goal is to produce an exact three-dimensional negative replica of the hard and soft intraoral tissues and its quality significantly affects the accurate fit of the final restoration [1]. Since the introduction of the dual-arch impression technique, its popularity has steadily grown due to its wide range of advantages which includes patient comfort, efficiency, economy of materials and the convenience of capturing the prepared abutment, the inter-occlusal record and the opposing arch simultaneously. The technique has been referred to as the “dual-arch impression technique”, “double-arch impression technique”, “closed-mouth impression technique” or “triple-tray impression technique” [2].

Ceyhan, et al. compared gypsum working dies made from impressions with metal triple trays, flexible triple trays and complete custom trays. Eight candidates with a posterior single tooth implant retained crown were selected [3]. A customized abutment was measured in three dimensions using a measuring microscope. Three polyvinyl siloxane impressions were made of the abutment and each impression was poured with type IV improved dental stone. The buccolingual, mesiodistal and occlusogingival dimensions were measured several times to obtain the mean values. These values were the control and were matched with the readings of the gypsum dies generated by the three different impression methods. There were no significant differences in the die accuracy among the three trays for the mesiodistal and the occlusogingival dimensions but they were significantly larger in the buccolingual dimension.

Cayouette, et al. Analyzed the dimensions of castings made using four types of trays; metal triple tray, flexible triple tray, plastic stock tray, custom acrylic tray and two types of impression materials to the dimensions of an original master model [4]. PVS and polyether impressions were made of two preparations of ivory teeth. Two grooves were placed on each preparation. In addition, points were placed each occlusal surfaces on finish lines. Models were prepared with type IV dental stone. A (3D) measuring system was used to determine the coordinates of thirty-two points on the master model and the resulting casts. Various dimensions were calculated from the measured coordinates. Results indicated that only the custom tray did not detect any inaccuracies and was as accurate as the master model.

Tan, et al. Determined whether there was a significant difference between the vertical marginal gaps of

cast restorations and computer-aided design / computer-aided manufacturing restorations [5]. They created ten working dies from a single master model and then fabricated ten restorations in each of the following groups: (CAD/CAM), (WAX/CAM) and (WAX/CAST). The restorations were seated on the master model and high-resolution digital photographs were taken for the marginal area on all of the four sides. The vertical marginal gaps were measured using a calibrated digital software program. The mean vertical marginal gap for the (CAD/CAM) group was 79.43 μm , 73.12 μm for the (WAX/CAM) group and 23.91 μm for the (WAX/CAST) group. There was a statistically significant difference between the (WAX/CAST) group and the remaining groups. The (WAX/CAST) technique produced the smallest vertical marginal gaps among all the tested groups.

Gonzalo, et al. Compared the changes in the marginal fit of posterior fixed metal ceramic dental prosthesis fabricated with the conventional lost wax technique and zirconium systems manufactured using CAD/CAM technology before and after cementation [6].

Forty standardized master steel dies with two abutments simulating first mandibular premolars were fabricated to receive a posterior three unit FPD. Measurements were made with an image analysis program on the master steel model before and after conventional cementation with glass ionomer cement. No significant differences in the vertical marginal fit before and after cementation were recorded for the analyzed groups. The accuracy of fit achieved for metal ceramic groups and the zirconium groups analyzed was within the range of clinical acceptance and the discrepancies were lower in the metal ceramic group. The accuracy of the castings generated from the dual-arch impression technique using impression materials of different stiffness along with impression trays of different flexibility however remains in question.

Material and Methods

The mandibular right first molar of a typodont model (Ramsis dental, Egypt) was prepared using a milling surveyor unit (Fraesgerat F1, Degussa, Germany) to receive a cast metal coping [Figure 1].



Figure 1: Cutting bur orientation parallel to the long axis of the prepared model.

Notches were made on the buccal, lingual, mesial and distal surfaces to act as future reference measuring

points as well as an anti-rotational element for the cast coping. The typodont was mounted in maximum intercuspation to a semi-adjustable articulator (Magnetic denture articulator, China) equipped with an aluminum vertical tray positioner to stabilize the dual-arch impression trays in a buccolingual direction, a copper tray clamping jig to stabilize the dual-arch impression trays in a mesiodistal direction and a 1.5 kg lead weight placed on top of the upper compartment of the articulator to simulate constant occlusal force during the setting time of the impression materials [7], [Figure 2].



Figure 2: Closed semi-adjustable articulator with mounted models, dual-arch tray, vertical tray positioner, tray clamping jig and 1.5 kg weight on top.

Metal posterior dual-arch impression trays (The Gripper, Discus dental, USA), plastic posterior dual-arch impression trays (Easy tray 3A, MEDES, Korea) and a lower full arch dentulous auto polymerizing acrylic resin impression tray (Acrostone, Egypt) were obtained. Heavy body PVS material (Panasil tray fast, Kettenbach dental, Germany) and light body PVS impression material (Panasil initial contact light fast, Kettenbach dental, Germany) were obtained. A dual viscosity single step impression technique was used. The light body material was injected around and over the prepared molar. Both sides of the triple trays were loaded with the heavy material which was dispensed from a mixing unit (Pentamix, ESPE, USA) then trays were placed over the posterior mandibular teeth on the right side of the typodont and the articulator was closed until the unprepared teeth touched. This was confirmed by the guide pin on the articulator [7]. The trays were positioned so that the back of the tray did not impinge on the simulated gingiva distal to the third molars. A polyether impression material (Impergum Penta, 3M ESPE AG, Germany) was also used with each tray type. The single body material was injected around the tooth and placed in the tray using the same technique previously described. Each impression was allowed to set for six minutes before it was snaply removed from the typodont. Ten impressions were made with each tray type. After that, moulds were prepared in improved dental stone (SynaRock XR DIAMON, Germany) and patterns were fabricated on each removable die using a hard blue wax (Renfert Master Wax Singen, Germany) then cast into full metal cast copings using a nickel based dental alloy (Mealloy DENTSPLY, Italy) using a centrifugal casting machine (Supercast RDO, NJ, USA).

The occlusolingival, mesiodistal and buccolingual dimensions of the prepared molar and each obtained removable stone die were measured five times using a traveling microscope (M420, Leica Bensheim, Germany) using the sharp corners of the previously prepared notches as reference measuring points. Also, each obtained metal cast coping was seated on the master prepared model and examined for its vertical marginal gap accuracy using the travelling microscope. One way ANOVA followed by pair-wise tukey's post-hoc tests were performed to detect the significance between tray groups, then separate student t-test to detect the significance between subgroups. Multi-factorial analysis of variance ANOVA tests of significance were executed to contrast the variables affecting the accuracy of the dies and the vertical marginal gap of the metal copings. P values ≤ 0.05 were considered to be statistically significant in all tests.

Results

Effect of various trays and materials on the occluso-gingival (OG) height of the dies

Stone dies obtained from both impression materials recorded the highest change in (OG) height mean values with the plastic tray followed by the acrylic tray while the metal tray recorded the lowest change in (OG) height mean values [Table 1].

Impression Materials	Polyether		Polyvinyl siloxane	
	Mean \pm SD	Change (%)	Mean \pm SD	Change (%)
Tray type				
Metal	3.64 \pm 0.09	-0.12 (-3.19)	3.68 \pm 0.35	-0.08 (-2.13)
Acrylic	3.49 \pm 0.16	-0.27 (-7.18)	3.51 \pm 0.17	-0.25 (-6.65)
Plastic	3.41 \pm 0.21	-0.35 (-9.31)	3.45 \pm 0.15	-0.31 (-8.24)
Master	3.76 \pm 0.51			

Table 1: Occlusolingival height mean values of the stone dies obtained from both impression materials made in different tray materials measured in mm.

The difference in the (OG) height mean values of the obtained stone dies between different tray materials as well as different impression materials was statistically non-significant as revealed by ANOVA [figure 3].

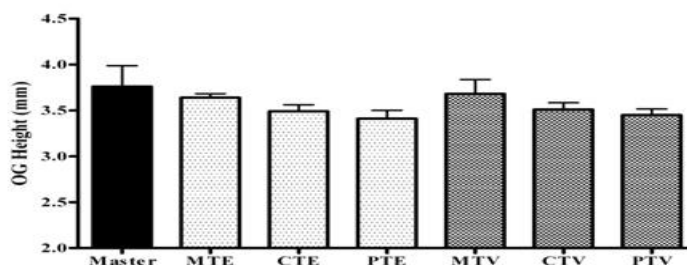


Figure 3: A column chart of the occlusolingival height mean values of the stone dies obtained from both impression materials made in different tray materials (n=5).

This shows that the impression & the tray material has no significant effects on the (OG) height. Although

we observed better results with the metal trays followed by the acrylic and finally the plastic trays, the results did not reach significance.

Effect of different tray and impression materials on the mesiodistal (MD) width of the stone dies

Stone dies obtained from both impression materials recorded the highest change in (MD) width mean values with the plastic tray followed by the acrylic tray while the metal tray recorded the lowest change in (MD) width mean values [Table 2].

Impression Material	Polyether		Polyvinyl siloxane	
	Mean±SD	Change (%)	Mean±SD	Change (%)
Tray type				
Metal	7.32±0.08	0.12 (1.67)	7.34±0.13	0.14 (1.94)
Acrylic	7.41±0.11	0.21 (2.92)	7.39±0.14	0.19 (2.64)
Plastic	7.46±0.24	0.26 (3.61)	7.50±0.21	0.30 (4.17)
Master	7.20±0.21			

Table 2: Mesiodistal width mean values of the obtained stone dies from both impression materials made in different tray materials measured in mm.

The difference in (MD) width mean values of the obtained stone dies between different tray materials as well as different impression materials was statistically non-significant as revealed by ANOVA [figure 4].

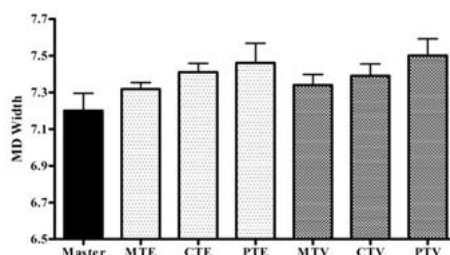


Figure 4: A column chart of mesiodistal width mean values of the obtained stone dies from both impression materials made in different tray materials (n=5).

Although the results did not reach significance, this pattern suggests the possible superiority of the metal trays over both the acrylic and the plastic trays.

Tray material but not impression material affects the buccolingual (BL) width of the stone dies

Stone dies obtained from both impression materials recorded the highest change in (BL) width mean values with the plastic tray followed by the acrylic tray while the metal tray recorded the lowest change in (BL) width mean values [Table 3].

Impression materials	Polyether		Polyvinyl siloxane	
	Mean±SD	Change (%)	Mean±SD	Change (%)
Tray type				
Metal	6.42±0.06	0.33 (5.46)	6.40±0.09	0.31 (5.13)
Acrylic	6.50±0.07	0.41 (6.76)	6.50±0.05	0.42 (6.83)
Plastic	6.98±0.05	0.89 (14.65)	6.96±0.10	0.87 (14.37)
Master	6.09±0.54			

Table 3: Buccolingual width mean values of the stone dies obtained from both impression materials made in different tray materials measured in mm.

The difference in (BL) width mean values between different tray materials was statistically significant as revealed by ANOVA [figure 5].

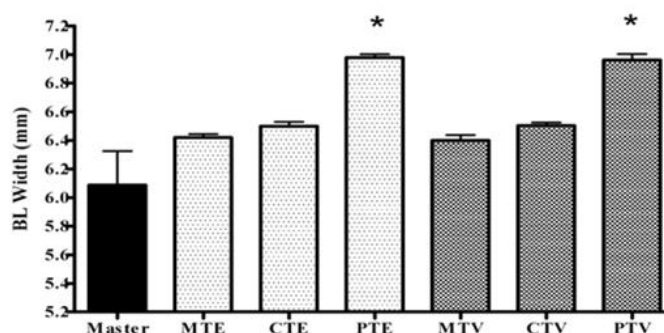


Figure 5: A column chart of buccolingual width mean values of the stone dies obtained from both impressions made in different tray materials (n=5).

Our results suggest the superiority of the metal trays over both the acrylic and the plastic tray materials.

Tray material but not impression material affects vertical marginal gap (MG) of the metal copings

Both impression materials when used with the plastic tray recorded the highest (MG) mean value for the obtained metal copings followed by the acrylic tray while the lowest (MG) mean value was recorded by the metal tray. The (MG) mean value of the obtained metal copings with the plastic tray was significantly higher than the (MG) mean values of the metal copings obtained from the metal and the acrylic trays. The (MG) mean values of the obtained metal copings with the acrylic tray were non-significantly higher than (MG) mean values obtained from the metal tray [Figure 6].

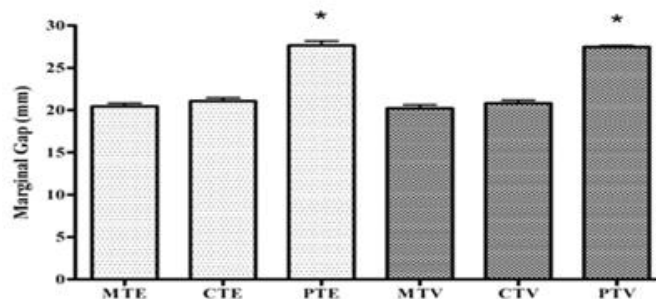


Figure 6: A column chart of vertical marginal gap mean values of the metal copings obtained from both impression material made in different tray materials (n=5).

These results show that the tray but not the impression material affects the vertical marginal gap of the metal copings. The results also suggest the superiority of the metal trays over both the acrylic and the plastic trays.

Discussion

Dual-arch impression trays are routinely employed for final impressions of fixed prosthodontic preparations. Of concern, is the accuracy of the castings obtained from these trays as the accuracy studies for the dual-arch impressions vary in their conclusions [8].

This study was performed to assess and compare the accuracy of the dies and the vertical marginal gap of the metal copings retrieved from different types of impression materials of different stiffness; namely, the polyvinyl siloxane impression material and the polyether impression material used in conjunction with three different types of impression trays of different flexibility; the metal and plastic dual-arch impression trays and a custom made self-curing acrylic resin impression tray.

The dual viscosity single step impression technique is a technique which employs a light body impression material in an elastomer syringe and a heavy body impression material in the impression tray [9]. This technique was suggested by some authors as being one of the best techniques to be used with elastomeric impression materials of such viscosities [10].

A 1.5 kg metallic weight was placed on the semi-adjustable articulator during the setting time of the materials as the maximum voluntary biting force (MVBF) in adult humans ranged from 15 to 16 Newton which is equivalent to 1.5 kilogram-force [11].

In this study, the obtained mean values of the dimensional accuracy of the stone dies showed that the metal dual-arch trays produced the most accurate dies followed by the custom-made acrylic resin tray and greater variability existed in the die dimensions produced with the plastic trays regardless of the impression type. These findings coincided with those reported [10, 7].

The variation between plastic and metal dual-arch impression trays could be attributed to the relative

flexibility of the plastic dual-arch impression trays in comparison to the rigid metal dual-arch impression trays. Similar results were quoted in the studies done [10,12].

The stone dies obtained in this study were generally larger than the control model except for the OG height dimensions. This may be due to the effect of using a tray adhesive which redirected the impression materials polymerization shrinkage towards the impression tray walls and away from the unsupported areas instead of the center of the impression material [13].

In this study, the occlusogingival height of the stone dies obtained from the two impression materials and the three impression trays combinations were measured and compared to the original prepared model and it was found that there were no significant differences between the two impression materials used in this study, but there was a difference between the impression tray materials yielding the largest change for the plastic dual-arch impression trays and the smallest for the metal dual-arch impression trays. This may be attributed to the fact of using a tray adhesive, which in case of the plastic dual-arch impression trays was sprayed on all of its surfaces which included additional retention plugs that increased the surface area available for the adhesive resulting in an increased shrinkage towards the tray walls and in turn to a die with an altered dimension. This finding goes in accordance with the results reported [7].

In this study, the mesiodistal and the buccolingual widths of the obtained stone dies from the two impression materials and the three impression trays combinations were measured and compared to the original prepared model and it was found that there were significant differences between different tray materials for the buccolingual width with the highest change for the plastic tray and the smallest change for the metal tray with no significant difference between impression materials. Reported similar results [3].

In this study, the vertical marginal gaps for the cast metal copings obtained from the two impression materials and the three impression tray materials combinations were measured. It was found that the mean vertical marginal gap openings ranged from $20.2 \pm 0.9 \mu\text{m}$ for the metal dual-arch impression trays to $20.8 \pm 0.9 \mu\text{m}$ for the custom-made acrylic resin impression tray and $27.7 \pm 1.1 \mu\text{m}$ for the flexible triple impression trays. All measurements were within the clinically acceptable range for the cast restorations made from base metal dental alloys which was up to $55 \pm 3 \mu\text{m}$ () with no significant differences between the used impression materials. Although the use of custom-made impression trays has long been proven to produce more accurate working casts for restorative procedures, dual-arch stock trays were able to provide accurate clinical results when used for single unit restorations [14,15].

Conclusion

1. The high rigidity of the tray materials and the high stiffness of the impressions produce more accurate dies.

2. The interaction between the tray material and the impression material significantly affects the dimensional accuracy of the obtained stone dies especially in the buccolingual dimension.
3. The impression tray materials significantly affected the vertical marginal gap mean values.

References

1. Pamenius M, Ohlson NG. (1995) Influence of dimensional stability of impression materials on the probability of acceptance of a prosthetic restoration. *Biomaterials*. 16(15):1193-7.
2. Idris B, Houston F, Claffey N. (1995) Comparison of the dimensional accuracy of one-and two-step techniques with the use of putty/wash addition silicone impression materials. *J Prosthet Dent*. 74(5):535-41.
3. Ceyhan JA, Johnson GH, Lepe X, Phillips KM. (2003) A clinical study comparing the three-dimensional accuracy of a working die generated from two dual-arch trays and a complete-arch custom tray. *J Prosthet Dent*. 90(3):228-34.
4. Cayouette MJ, Burgess JO, Jones RE Jr, Yuan CH. (2003) Three-dimensional analysis of dual-arch impression trays. *Quint Int*. 34(3):189-98.
5. Tan PL, Gratton DG, Diaz-Arnold AM, Holmes DC. (2008) An In-Vitro comparison of vertical marginal gaps of CAD/CAM titanium and conventional cast restorations. *Int J Prosthodont*. 17(5):378-83.
6. Gonzalo E, Maria J, Serrano B, Lozano FL. (2009) A comparison of the marginal vertical discrepancies of zirconium and metal ceramic posterior fixed dental prostheses before and after cementation. *J Prosthet Dent*. 102(6):378-84.
7. Breeding LC, Dixon DL. (2000) Accuracy of casts generated from dual-arch impressions. *J Prosthet Dent*. 84(4):403-7.
8. Boulton JL, Gage JP, Vincent PF, Basford KE. (1996) A laboratory study of dimensional changes for three elastomeric impression materials using custom and stock trays. *Aust Dent J*. 41(6):398-404.
9. Nissan J, Laufer BZ, Brosh T, Assif D. (2000) Accuracy of three polyvinyl siloxane putty-wash impression techniques. *J Prosthet Dent*. 83(2):161-5.
10. Davis RD, Schwartz RS. (1991) Dual-arch and custom tray impression accuracy. *Am J Dent*. 4(2):89-92.
11. Varga S, Spalj S, Varga M, Milosevic SA, Mestrovic S, et al. (2011) Maximum voluntary molar bite force in subjects with normal occlusion. *Euro J Ortho*. 33(4):427-33.
12. Cox JR, Brandt RL, Hughes HJ. (2002) A clinical pilot study of the dimensional accuracy of double-arch and complete-arch impressions. *J Prosthet Dent*. 87(5):510-5.
13. Chen SY, Liang WM, Chen FN. (2004) Factors affecting the accuracy of elastomeric impression materials. *J Prosthet Dent*. 32(8):603-9.
14. Bronson MR, Lindquist TJ, Dawson DV. (2005) Clinical acceptability of crown margins versus marginal gaps as determined by pre-doctoral students and prosthodontists. *J Prosthodont*. 14(4):226-32.
15. Leknius C, Giusti L, Chambers D, Hong C. (2010) Effects of clinical experience and explorer type on judged crown margin acceptability. *Int J Prosthodont*. 19(2):138-43.